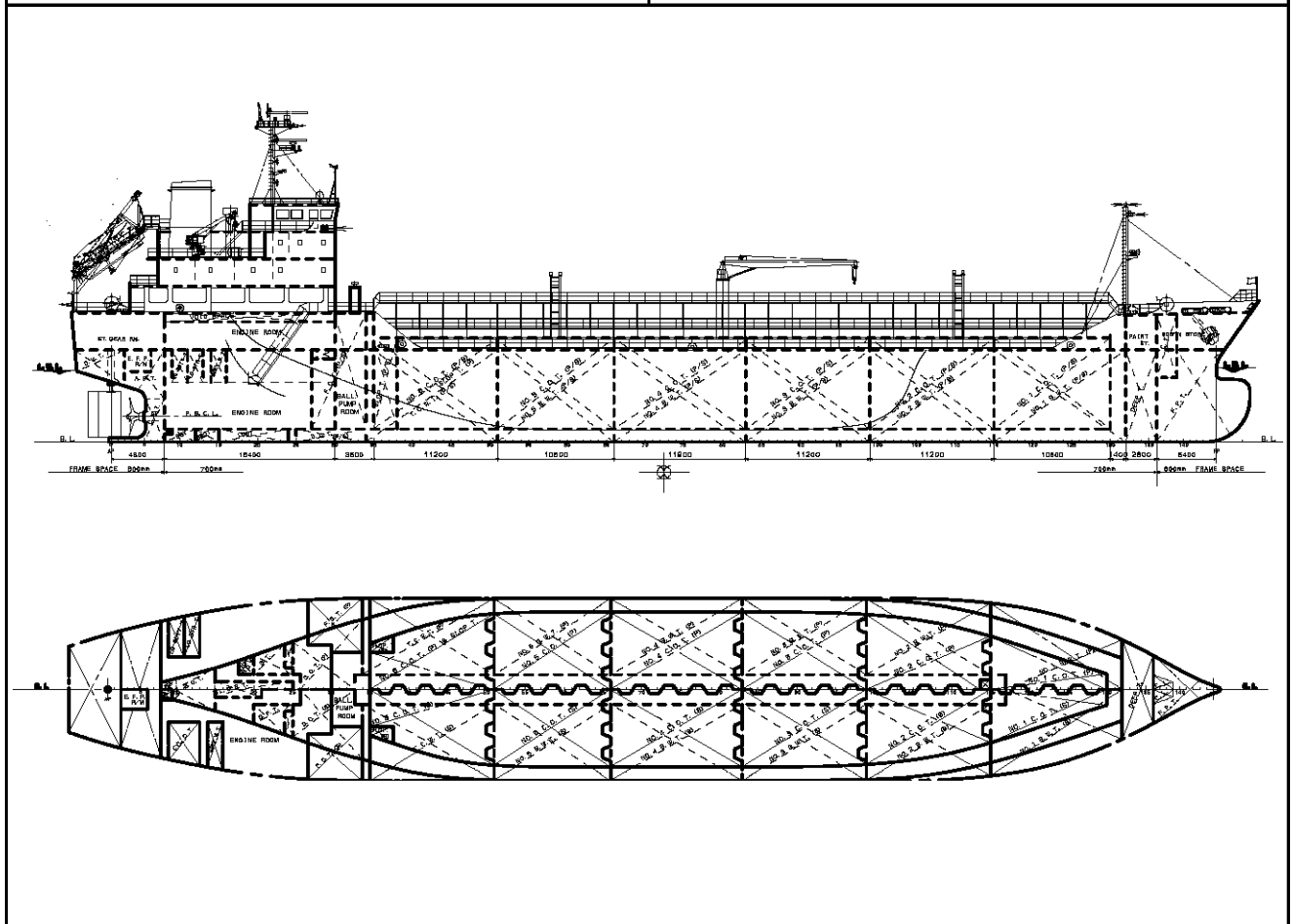


6,800 DWT Chemical tanker. (IMO II TANKER)

Ship Type	Product / Chemical carrier	Cargo Handling System	Tank : Cargo × 12 + Slop × 1 12 – cargo pump (each 200 m ³ /h) 1– slop pump (100 m ³ /h)
Main Dimension	Length over all abt. 107.35 m Length betw. perp 99.80 m Breadth mld. 16.80 m Depth mld. 8.50 m Designed draft mld. 7.10 m	Main Engine	MAN B&W 6L35MC (MK6) M.C.O 3,120 KW (4,230 PS) × 210 min ⁻¹
Deadweight	abt. 6,800MT	Fuel Oil Consumption	175 g/kW/h + 5%
Gross Tonnage	abt. 4,500GT	Cargo Tank Capacity	
Complement	22 persons	Slop Tank 122.00 m ³	
Service Speed	abt. 13.5 knots at designed draft & C.S.O. with 15% sea margin	No.1 C.O.T 865.00 m ³ (P/S) No.2 C.O.T 1,310.00 m ³ (P/S) No.3 C.O.T 1,365.00 m ³ (P/S) No.4 C.O.T 1,450.00 m ³ (P/S) No.5 C.O.T 1,280.00 m ³ (P/S) No.6 C.O.T 1,172.00 m ³ (P/S)	
Tank Coating	NSSC 2120 or SUS 316L	TOTAL 7,442.00 m ³ (P/S)	



HAKATA SHIPBUILDING CO.,LTD

535-2 KINOURA HAKATA-CHO, IMABARI. 794-2395 EHIME-PREF.,JAPAN

TEL (0897)72-1345 FAX (0897)72-2623