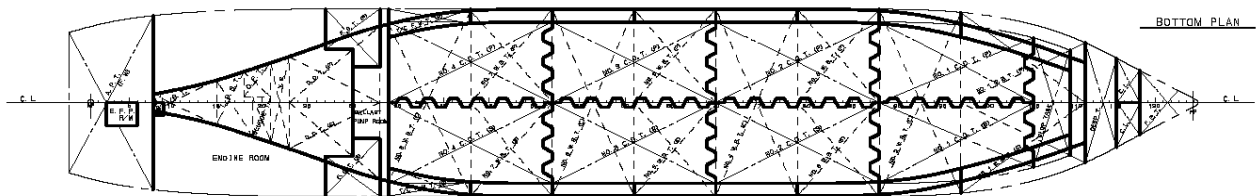
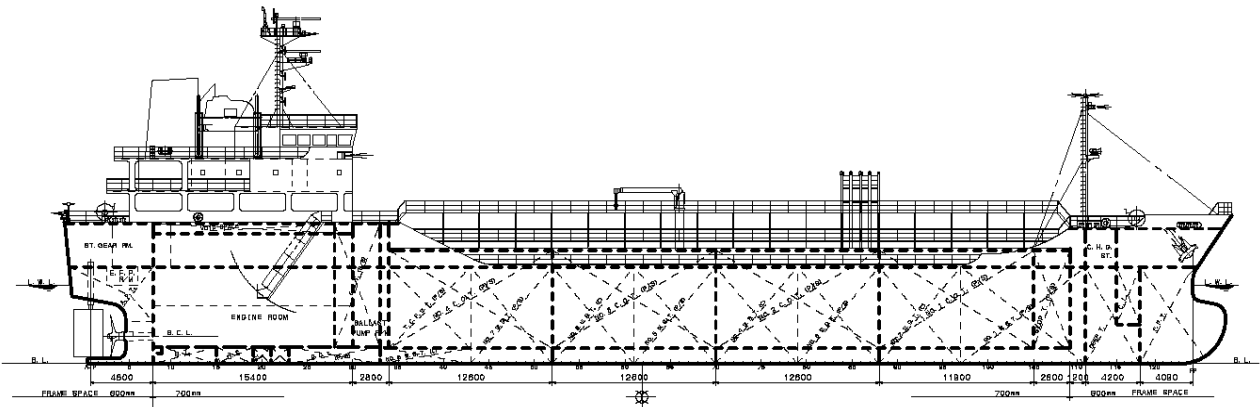


3,900 DWT Chemical tanker. (IMO II TANKER)

Ship Type	Product / Chemical carrier	Cargo Handling System	Tank : Cargo × 8 + Slop × 1 8 – cargo pump (each 200 m ³ /h) 1– portable pump 70 (100 m ³ /h)
Main Dimension	Length over all abt. 89.90 m Length betw. perp 84.99 m Breadth mld. 14.60 m Depth mld. 7.55 m Designed draft mld. 6.10 m	Main Engine	Hanshin LH41L M.C.O 2,427 kW (3,300 PS) × 225 min ⁻¹
Deadweight	abt. 3,900MT	Fuel Oil Consumption	179 g/kW/h + 5%
Gross Tonnage	abt. 2,999GT	Cargo Tank Capacity	
Complement	17 persons	Slop Tank	174.00 m ³
Service Speed	abt. 13.2 knots at designed draft & C.S.O. with 15% sea margin	No.1 C.O.T	966.00 m ³ (P/S)
Tank Coating	NSSC 2120 or SUS 316L	No.2 C.O.T	1,183.00 m ³ (P/S)
		No.3 C.O.T	1,183.00 m ³ (P/S)
		No.4 C.O.T	1,176.00 m ³ (P/S)
		TOTAL	4,682.00 m³ (P/S)



HAKATA SHIPBUILDING CO.,LTD

535-2 KINOURA HAKATA-CHO, IMABARI. 794-2395 EHIME-PREF.,JAPAN

TEL (0897)72-1345 FAX (0897)72-2623