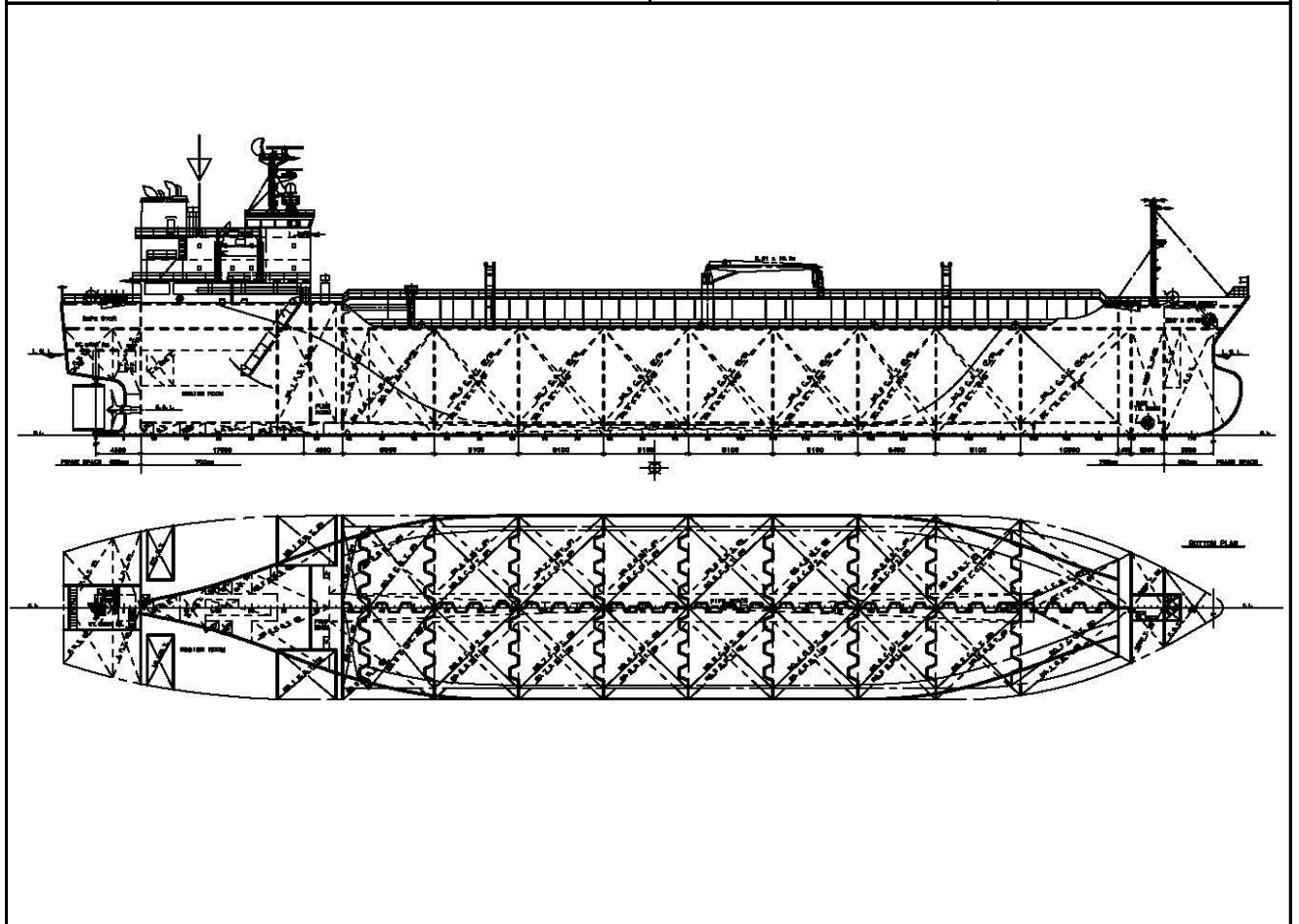


## 12,800 DWT Chemical tanker. ( IMO II TANKER )

<b>Ship Type</b>	Product / Chemical carrier	<b>Cargo Handling System</b>	Tank : Cargo × 18 + Slop × 2 18 – cargo pump (each 200 m <sup>3</sup> /h) 2– slop pump (100 m <sup>3</sup> /h)
<b>Main Dimension</b>	Length over all        abt. 127.75 m Length betw. perp        120.00 m Breadth mld.            19.90 m Depth mld.                11.70 m Designed draft mld.     8.80 m	<b>Main Engine</b>	MAN B&W 7L35MC (MK-6) M.C.O 3,900 KW (5,303 PS) × 210 min <sup>-1</sup>
<b>Deadweight</b>	abt. 12,800MT	<b>Fuel Oil Consumption</b>	176 g/kW/h + 5%
<b>Gross Tonnage</b>	abt. 7,700GT	<b>Cargo Tank Capacity</b>	
<b>Complement</b>	22 persons	No.1 C.O.T	1,266 m <sup>3</sup> (P/S)
<b>Service Speed</b>	abt. 12.8 knots at designed draft & C.S.O. with 15% sea margin	No.2 C.O.T	1,551 m <sup>3</sup> (P/S)
<b>Tank Coating</b>	NSSC 2120 or SUS 316L	No.3 C.O.T	1,517 m <sup>3</sup> (P/S)
		No.4 C.O.T	1,644 m <sup>3</sup> (P/S)
		No.5 C.O.T	1,644 m <sup>3</sup> (P/S)
		No.6 C.O.T	1,644 m <sup>3</sup> (P/S)
		No.7 C.O.T	1,644 m <sup>3</sup> (P/S)
		No.8 C.O.T	1,644 m <sup>3</sup> (P/S)
		No.9 C.O.T	1,243 m <sup>3</sup> (P/S)
		Slop Tank	431 m <sup>3</sup> (P/S)
		<b>TOTAL</b>	<b>14,228 m<sup>3</sup> (P/S)</b>



**HAKATA SHIPBUILDING CO.,LTD**

535-2 KINOURA HAKATA-CHO, IMABARI. 794-2395 EHIME-PREF.,JAPAN

TEL (0897)72-1345 FAX (0897)72-2623